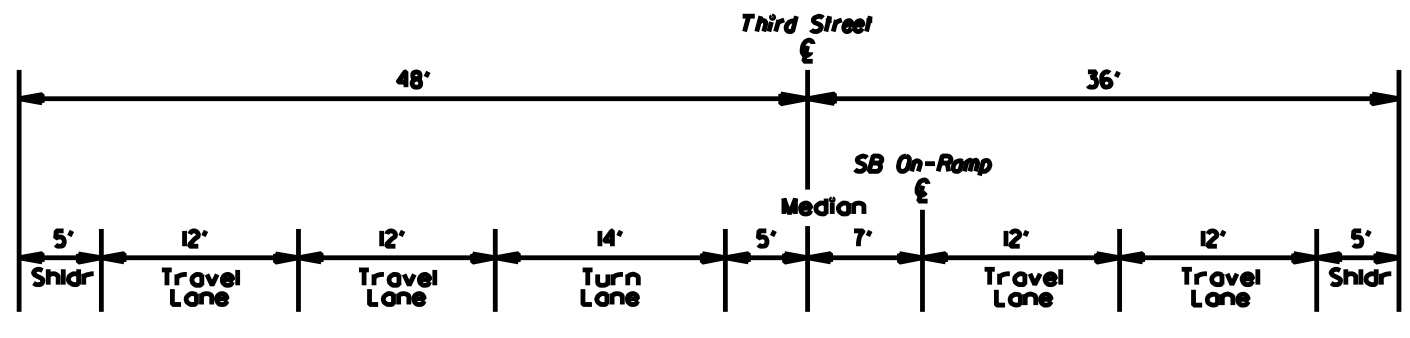
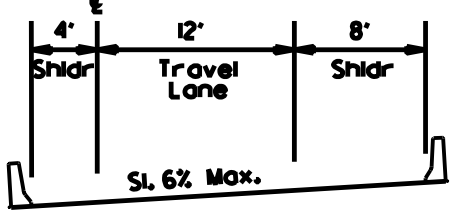


SECTION A-A
Typical Section @ Structure
(US 97 Under SB On-Ramp)

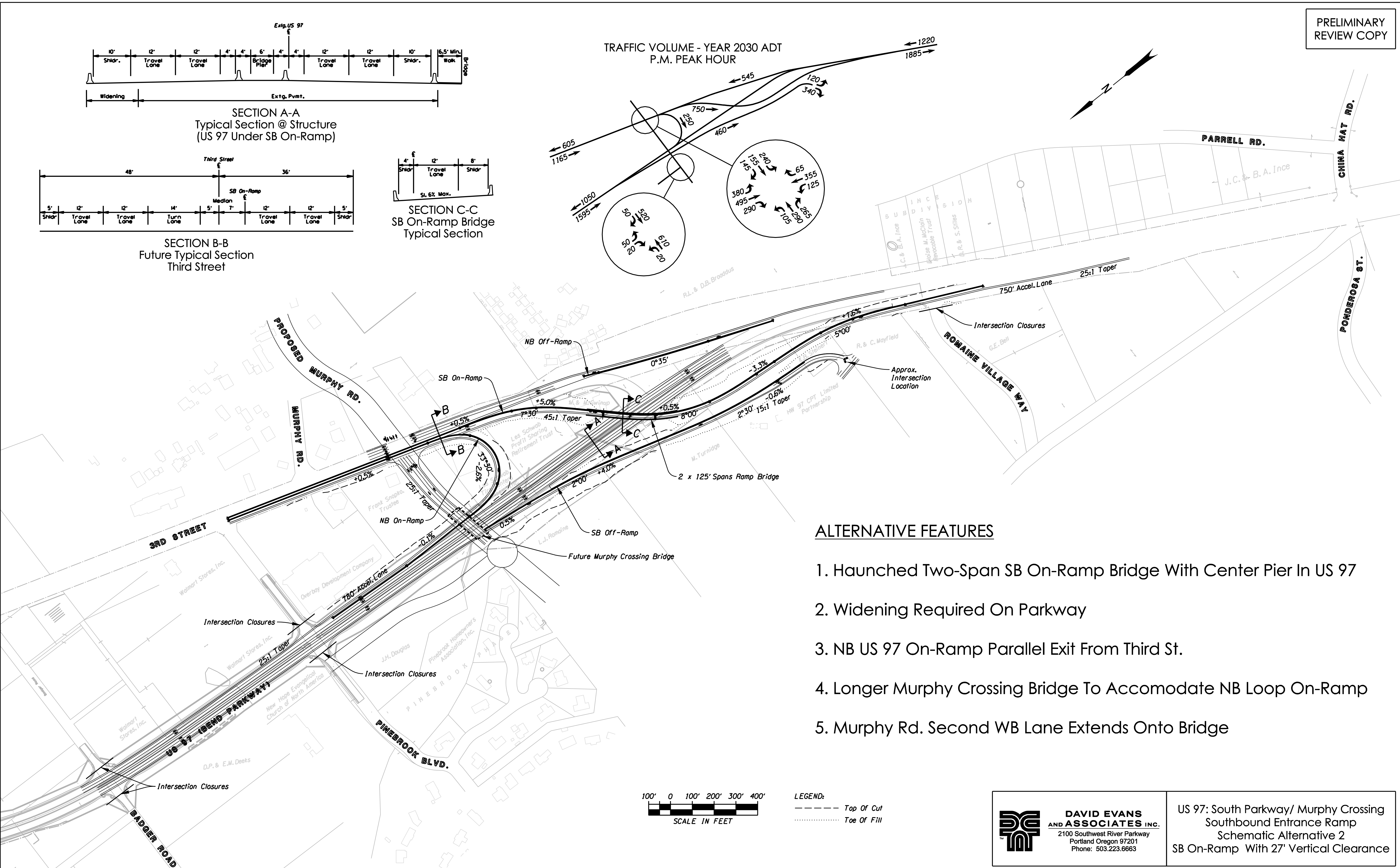
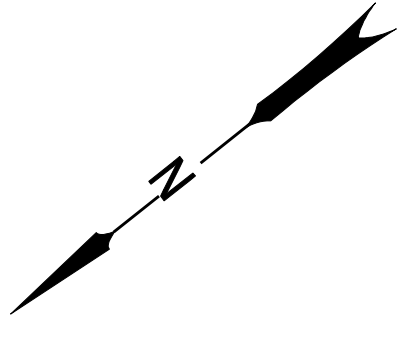
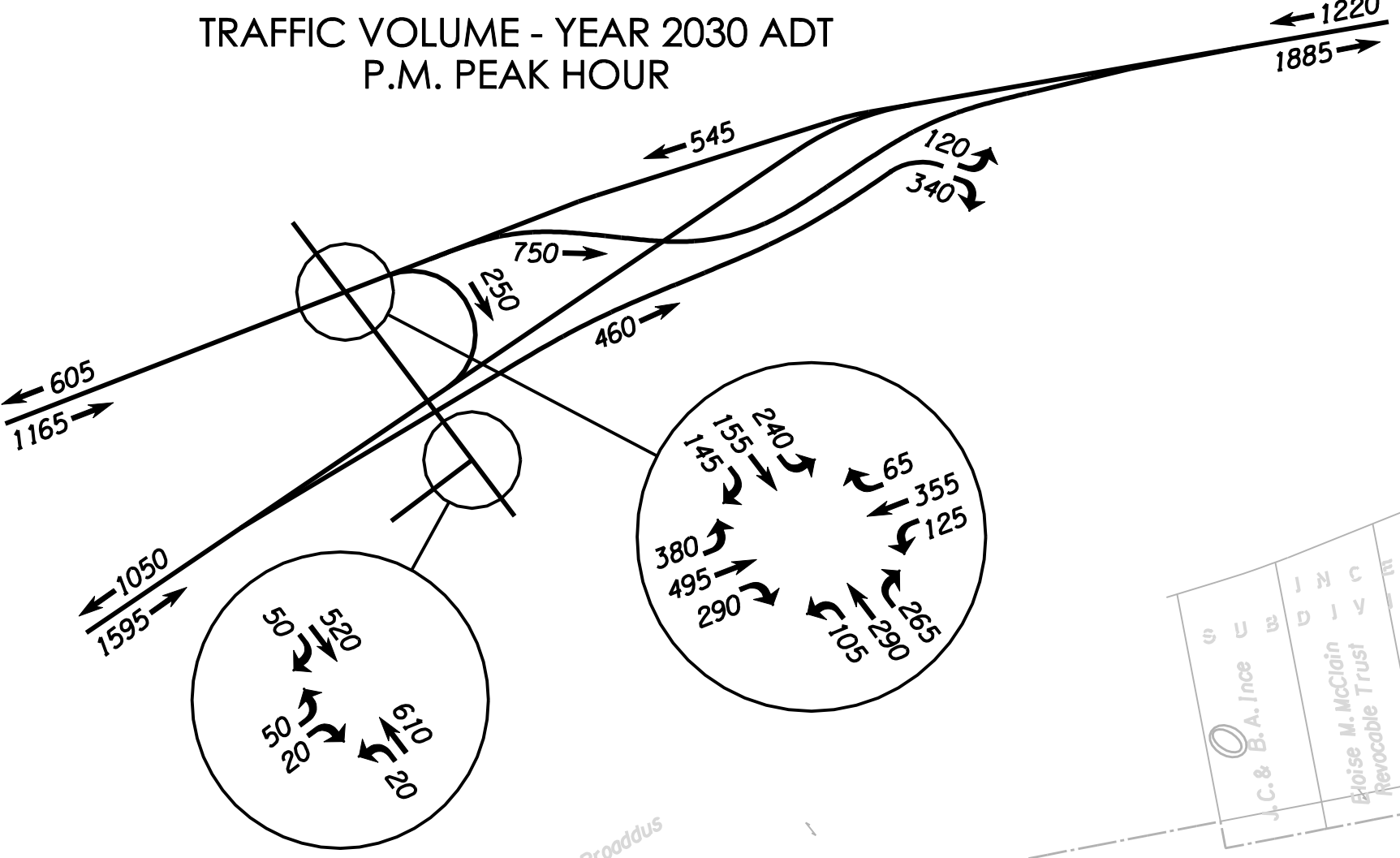


SECTION B-B
Future Typical Section
Third Street



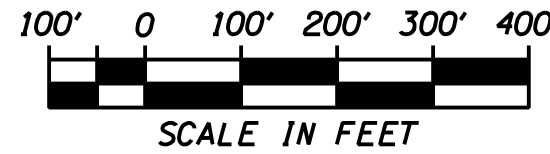
SECTION C-C
SB On-Ramp Bridge
Typical Section

TRAFFIC VOLUME - YEAR 2030 ADT
P.M. PEAK HOUR



ALTERNATIVE FEATURES

1. Haunched Two-Span SB On-Ramp Bridge With Center Pier In US 97
2. Widening Required On Parkway
3. NB US 97 On-Ramp Parallel Exit From Third St.
4. Longer Murphy Crossing Bridge To Accomodate NB Loop On-Ramp
5. Murphy Rd. Second WB Lane Extends Onto Bridge



LEGEND:
 - - - Top Of Cut
 Toe Of Fill

**DAVID EVANS
AND ASSOCIATES INC.**
 2100 Southwest River Parkway
 Portland Oregon 97201
 Phone: 503.223.6663

US 97: South Parkway/ Murphy Crossing
 Southbound Entrance Ramp
 Schematic Alternative 2
 SB On-Ramp With 27' Vertical Clearance